

UPGRADE YOUR WOLRD

FUN • DIVE  
COMBO  
PACKAGES

马累国际机场  
Velana International Airport



甘岛国际机场  
Gan International Airport

0°

EQUATOR DIVE  
MALDIVES • ADDU

*info@diveblue.net*

# EQUATOR DIVE

## SOUTHERNMOST POINT OF MALDIVES

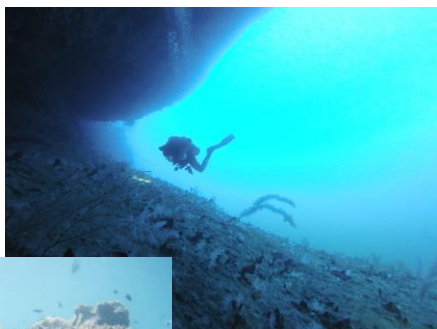
**MANTA! all year round**  
**TIGER SHARK! 99%**  
**WHALE SHARK! OCEANIC SHARK!**  
**GIANT GREEN SEA TURTLE!**

### Throughout Maldives:

- ✓ The Most gathering place for large marine lifes
- ✓ The Biggest ship wreck (WWII, 140m in length)
- ✓ The Biggest cave (overhang)
- ✓ Most healthy soft corals and hard corals
- ✓ The Richest diving resources

Only 10 – 45 min to each dive sites,  
suitable for all levels of divers:

- Shark Point
- Manta Cleaning Station
- Ship Wreck of WWII
- Turtle Point, Coral Garden
- Channel Dive, Wall Dive, Drift Dive, etc.



△▲For the good of underwater environment of Maldives, we therefore ask every and all divers to respect and protect our ocean. No touch, nor litter. Thanks!▲△



# SOUTH OF THE EQUATOR

A UNIQUE SCENERY

The southernmost atoll in the  
Maldives ---- Addu City

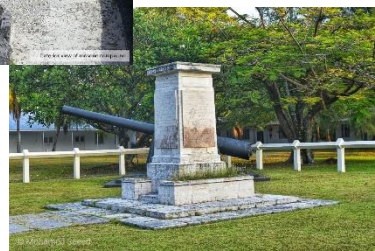
Recognized by UNESCO as  
**Biosphere Reserves**

16km of coastal road,  
**The Link Road**  
Connecting 4 inhabited islands

Mangrove Wetlands  
Bird Habitat

The most beautiful  
Equatorial Hospital

Historical Sites:  
Ancient Mosque  
Former RAF Base







潜水装备

马尔代夫

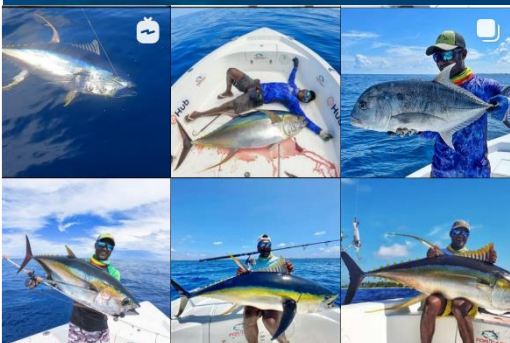
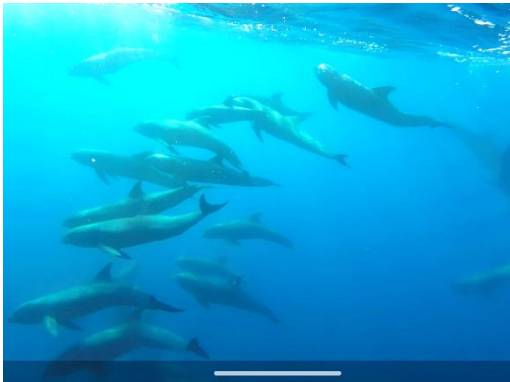
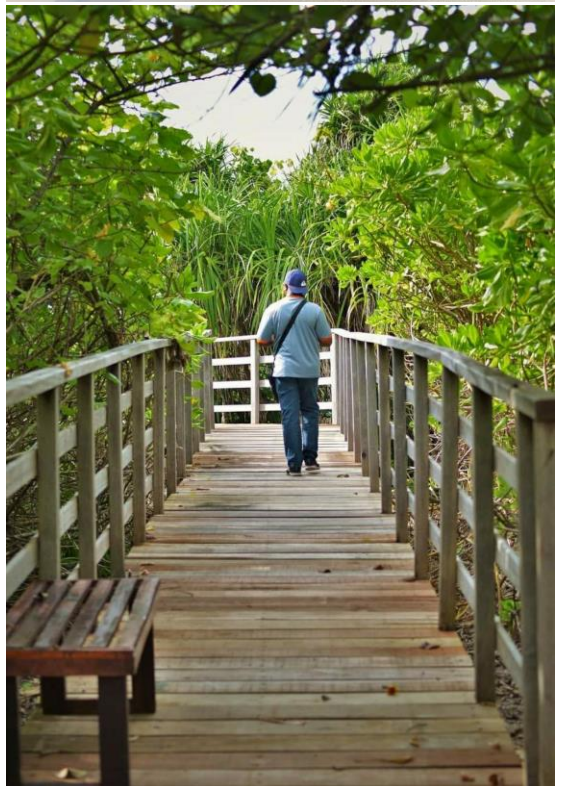
# ADDU NATURE PARK



# FEATURED ACTIVITIES

THINGS TO DO

- ❖ Diving
- ❖ Surfing
- ❖ Coastal Road Riding
- ❖ Wetland trekking & Bird Watching
- ❖ Visiting Monuments
- ❖ Big Game Fishing
- ❖ Dolphin Cruising
- ❖ Island Hopping



## ACCOMMODATION ENVIRONMENT

### COMFORTABLE BUDGET HOTEL

#### ❖ ACCOMMODATION

The accommodation provided in the package is a standard room of a budget hotel on a residential island, equipped with a swimming pool, Thai SPA, complete facilities, clean and tidy.

Rooms have queen or twin beds, and some rooms can accommodate an extra bed. Each room is equipped with a separate toilet, 24-hour hot shower, air conditioning, fan, free WIFI 。

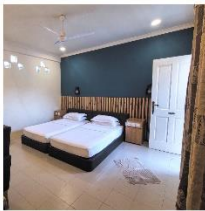
#### ❖ MEALS

Daily breakfast with traditional Maldivian breakfast, continental breakfast. Lunch and dinner are selected according to the season, with a wide choice of flavor.

There is also a Thai restaurant, prepared by Thai chefs.

#### ❖ ALCOHOL & BEVERAGES

Alcohol is prohibited on the inhabited island, but visitors can visit nearby resorts for alcoholic beverages.



#### ❖ BEACH BBQ

You can upgrade your dinner to a beach BBQ, or you can barbecue the catch of the day after returning from fishing.





## WAY TO ADDU

### DOMESTIC FLIGHT

#### ❖ International Flights Fly Directly to Gan Island

SriLankan Airlines currently flies directly from Colombo to Gan every Tuesday and Saturday.

More new international routes are expected to open soon.



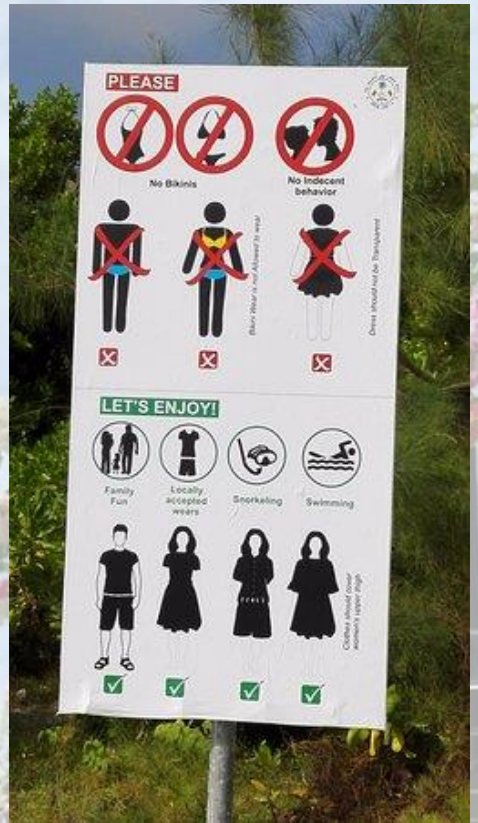
#### ❖ Malé Travels to And from Gan Island

In Malé, you can take an inland flight to Gan Island. Gan Airport is located 545 km from Male Airport, with a flight time of 1 hour and 35 minutes, operating 4-5 flights per day, which generally could connects international flights from Malé.

Inland Airlines Inquiry Website:  
[www.Maldivian.aero](http://www.Maldivian.aero).

We can book for you (no handling fee) at your convenience. Please apply at least 5 working days before departure, and must provide personal passport information and round-trip information for connecting international flights.







# EQUATOR DIVE



**FOR MORE INFORMATION**

MALDIVES → GAN

*info@diveblue.net*  
*WhatsApp: +9607570680*

